



May 2026

Link

A magazine for the parishes of Bunbury and Tilstone Fearnall



Remembering Andy Moore - page 10



Open Call



Arts Exhibition
St Boniface Church, Bunbury
26 - 28th June 2026

Are you an artist or Craftsperson?
Exhibit your work in this beautiful place.
All disciplines encouraged (painting, ceramics, photography, sculpture, textiles, wood, metal.....)
Submission deadline 19th May 2026

For more information including entry requirements contact
inspireart26@gmail.com (07860128427)
or visit <https://www.stbonifacebunbury.org>




INSPIRE2026 Submission form

Coffee Morning

14 MAY 10:00AM - 12:00PM
ST BONIFACE CHURCH



VINTAGE STALL AND PLANT SALE



www.stbonifacebunbury.org

In support Christian Aid and St Boniface church



ST. BONIFACE
CHURCH FÊTE
AT BEESTON CASTLE

MAY BANK HOLIDAY
MONDAY 4 MAY
11:00AM - 4:00PM

Join us for a great day out!
If you can help on the day or on Saturday 2 May please contact Elaine on 01829 260648



Follow Bunbury Church on Facebook

WHO WE ARE

TIM HAYWARD - Vicar

St Boniface, St Jude, & Calveley Chapel
01829 261511

revtimhayward@stbonifacebunbury.org

Associate Minister

Rev Claire Wilson

claire.wilson@stbonifacebunbury.org

Parish administrator

Kay Carson

parishadmin@stbonifacebunbury.org

Pastoral team leader

Amber Middlemiss

amber.middlemiss@stbonifacebunbury.org

St Boniface Church & Calveley Chapel

Churchwardens

Elaine Crotty

elaine.crotty@stbonifacebunbury.org

Astrid Logan

astrid.logan@stbonifacebunbury.org

Deputy Churchwarden

Sean Augustin-Wood

sean.augustin@stbonifacebunbury.org

Bunbury PCC Vice-chair

Elaine Crotty

elaine.crotty@stbonifacebunbury.org

Bunbury PCC Treasurer

pcctreasurer@stbonifacebunbury.org

Bunbury PCC Secretary

John Mason

pccsecretary@stbonifacebunbury.org

St Jude

Churchwardens

Elizabeth Marren 07551 411022

Mike Lightfoot 01829 732611

Organist

Ann Badrock 01829 260343

The Link

Please contact us to send us village news, views and pictures or to advertise your business.

Editorial: Elaine Crotty

parishlinkeditor@stbonifacebunbury.org

Advertising:

parishlinkads@stbonifacebunbury.org



Please give to St Boniface to maintain our beautiful church building

A WORD FROM THE EDITOR

This month our focus is on the annual fundraiser for Christian Aid. Christian Aid envelopes are attached to the magazines for you to use. The envelopes can be delivered to the Vicarage or to Sunnybank Cottage School Lane. Please also support the Christian Aid /St Boniface Church Coffee Morning on Thursday 14 May.

Thank you so much to those people who decorated the church so beautifully for Easter. On Easter Sunday the church was very well attended. Forty children attended Forest Church and 165 took communion. A really wonderful Easter! **Thank you all**

The Link has had a makeover — we hope you like it!

The copy deadline for the June issue is Friday 15 May. The magazine should be delivered from Friday 30 May.

Please send notices to: parishlinkeditor@stbonifacebunbury.org

EASTER JOY AT FOREST CHURCH



Our prayers

Risen Lord Jesus, thank you that you have come further than we could ever go, into our darkness, our loss, and even death itself, to bring us life.

Reconnect us to your love, restore what is broken within us, and lead us from fear into hope.

Fill us with your resurrection life, today and always. Amen.

God loves you... ...to the moon and back



Imagine a film you've half-seen, half-imagined. An astronaut drifts in space, separated from her spacecraft. Communication fails. Systems fall silent. For a moment, all seems lost.

It's a powerful image because it speaks of something we all recognise: disconnection. Being cut off. Alone in the vastness. And yet, that image helps us glimpse the meaning of Easter.

Humanity continues to reach further into space, driven by a deep longing to discover, to go beyond, to find meaning beyond ourselves. But every mission, no matter how far it travels, depends on one essential thing: connection.

A spacecraft is never meant to be alone. It relies on an unbroken link offering guidance and communication from those who hold the mission together. Without that connection, everything is at risk. Remarkably, during the recent Artemis II mission, the astronauts experienced a period of around 40 minutes when the spacecraft passed behind the moon and lost line-of-sight communication with Earth. For that time, there was total silence, a temporary blackout. And in that silence, everything depends on what has already been set in motion.

Easter begins in what looks like the ultimate loss of connection. Jesus Christ has been crucified. He has died. The one who brought healing, forgiveness, and hope appears to have been overcome. His friends are scattered. His followers are afraid. The world seems to fall silent. It looks as though his mission has failed.

But Easter morning tells a very different story, because the connection has not been broken. Love has not been defeated. Because Christ is risen.

This is not simply a return to life as it was before. It is something entirely new: resurrection life. Life that has passed through death and come out the other side: stronger, deeper, unbreakable.

We often think of faith as a journey we must make: an effort to reach a distant God. But Easter turns that idea on its head.

The Christian hope is not about how far we can travel.

It is about how far God has already travelled for us. In Jesus, God enters into the fullness of human experience.

Into suffering.

Into grief.

Into failure.

Into death itself.

There is no depth God is unwilling to go to reach us. And having gone there, he does not remain there. The resurrection is God's declaration that even death is not the end. That love is stronger than loss. That life is stronger than the grave.

This is the great "reconnection" at the heart of Easter.

We all know what it is to feel disconnected at times: from one another, and from God. We know the silence of grief, the fear that things may never be put right. We see it in the world around us too, in conflicts and the breakdown of trust. Moments when it feels as though the thread holding everything together has been stretched to breaking point.

Easter speaks into that reality, not as wishful thinking, but as a promise grounded in what God has done. It tells us that no-one is beyond hope. Because God has already gone further than we ever could. Further than our questions. Further than our doubts. Further even than death.

There is no distance we can travel: geographically, emotionally, or spiritually, where God's love cannot find us. No silence so deep that his voice cannot speak into it. No ending that cannot, in him, become a new beginning.

That is why Easter is filled with joy, because we are reminded of something extraordinary:

It is not about how far we travel. It is about how far God has travelled for us. And because of that, we can live with hope. Hope that love is stronger than death. Hope that life is stronger than the grave. Hope that nothing — absolutely nothing — can separate us from the love of God.

Community News



Christian Aid Week 10–16 May

<https://www.christianaid.org.uk/appeals/key-appeals/christian-aid-week>

Look out for your collection envelopes in this edition of the Link. Please drop your contributions in your envelopes either at The Vicarage, Bunbury Lane, or at Sunnybank Cottage, School Lane (Elaine Crotty's home). Otherwise please give online at christianaid.org.uk

Christian Aid Week Coffee Morning

will take place on **Thursday 14 May** between 10:00am and 12:00pm at St Boniface church. There will be a plant sale stall, a raffle and a vintage stall. Please come ready to browse and buy! If you have any pretty treasures, you'd be happy to donate (ceramics, glass, costume jewellery etc.) please contact Lucy on 07580 066153. To donate cakes and raffle prizes please leave a message for Elaine on 01829 260648. Proceeds will be split between Christian Aid and St Boniface church.

Beeston Church Fête will take place on Monday 4 May from 11:00am to 4:00pm. Any help setting up at 11:00am at Beeston Castle or taking down at 4:00pm or manning the refreshments would be much appreciated.

Tombola bottle donations and cakes can be delivered to Elaine at Sunnybank Cottage Lane, School, before the day. (Please contact Elaine before delivering on 01829 260648).

Pat Blackwood was presented with vouchers for garden supplies and an afternoon tea at a smart hotel, by the **ALIVE group**, who had gratefully donated in appreciation of all that Pat has done, and still does, for its members. Pat is pictured at the lunch club at the Nag's Head, with the ever-supportive Henry and staff.

The Hearing Bus will be in the Pavilion car park on Wednesday 20 May from 10:30am giving advice to villagers on any hearing issues.

The Annual Parochial Church Meeting of St Boniface Church Bunbury and election of churchwardens will take place on **Sunday 10 May** at 11:30am immediately after the 10:30am service. All are welcome at this meeting.

On Saturday 23 May there will be a tidy up of the perimeter of the church and churchyard. All are welcome. Please bring garden tools to help.

Bunbury Garden Club

Come and join us on our visit to Stoneyford Cottage Garden on **Tuesday 19 May** at 6:30pm at the property. Opportunities to purchase plants at the well-stocked nursery.

For further details contact Margaret Bourne on 01829 260944 or mjbourne249@tiscali.co.uk

Bunbury WI meets on the second Thursday of the month at Bunbury Playing Fields Pavilion at 7:30pm. At the May meeting Linda Barton and Richard Slater will demonstrate the use of the defibrillator, CPR and basic first aid. In June Hen Johnson will speak on "The WI in Wartime". Bunbury WI warmly welcomes visitors and new members. For further information contact Lynda Davies 01829 863781.



Café news

Both THE SHEDS and TILLYS coffee shops are committed to a thoughtful, sustainable use of waste. So in association with Bunbury Gardening Club a bright yellow bucket containing free coffee grinds is now at the front of their cafes. Please take a bag or container to collect your coffee and feed it to your plants.

What's on

Church diary for May

Sunday 3 May	8:00am BCP Communion 9:30am Morning Worship 10:30am Holy Communion and Forest Church	St Boniface St Jude St Boniface
Wednesday 6 May	10:00am BCP Communion	St Boniface
Sunday 10 May	9:30am BCP Communion 10:30am Morning Worship	St Jude St Boniface
Wednesday 13 May	10:00am BCP Communion	St Boniface
Sunday 17 May	9:30am Holy Communion 10:30am Third Sunday Brunch 6:00pm Evensong	St Jude St Boniface St Boniface
Wednesday 20 May	10:00am BCP Communion	St Boniface
Sunday 24 May	9:30am Morning Worship 10:30am Holy Communion	St Jude St Boniface
Wednesday 27 May	10:00am BCP Communion	St Boniface
Sunday 31 May	9:30am Morning Worship 10:30am Morning Worship	St Boniface



TILLYS are sponsoring Bunbury Cycling Club's brand-new team shirts. Look out for the Tilly's logo as the club pedal around Cheshire.

Bunbury Village Day will take place on Saturday 13 June and this year the theme celebrates the wildlife, countryside and community of Cheshire.

The village will come alive with Wild Bunbury – a celebration of the incredible wildlife, countryside and community spirit that make Cheshire such a special place to live.

We're delighted to welcome a growing number of fantastic organisations who will be bringing the "wild" to Bunbury, including:

Gauntlet Birds of Prey, Cheshire Wildlife Trust, The Creepy Crawly Show, Let's Farm, Mid-Cheshire Beekeepers Association, Northwich Hedgehog Rescue, Bunbury Gardening Club, Bunbury Mill, Sadlers Wells Community Woodland.

Wild Bunbury is not just about showcasing wildlife, but about bringing the community together – inspiring costumes for the parade, sparking creativity in decorations, and creating memorable, hands-on experiences throughout the day.

Whether you come for the tradition, the wildlife, or simply the atmosphere, Bunbury Village Day 2026 promises to be a fantastic day out for all ages.

www.facebook.com/BunburyVillageDay

www.instagram.com/bunburyvillageday

www.bunburyvillage.info/village-day

Spring Term

Bunbury School has reached the end of Spring term 2026

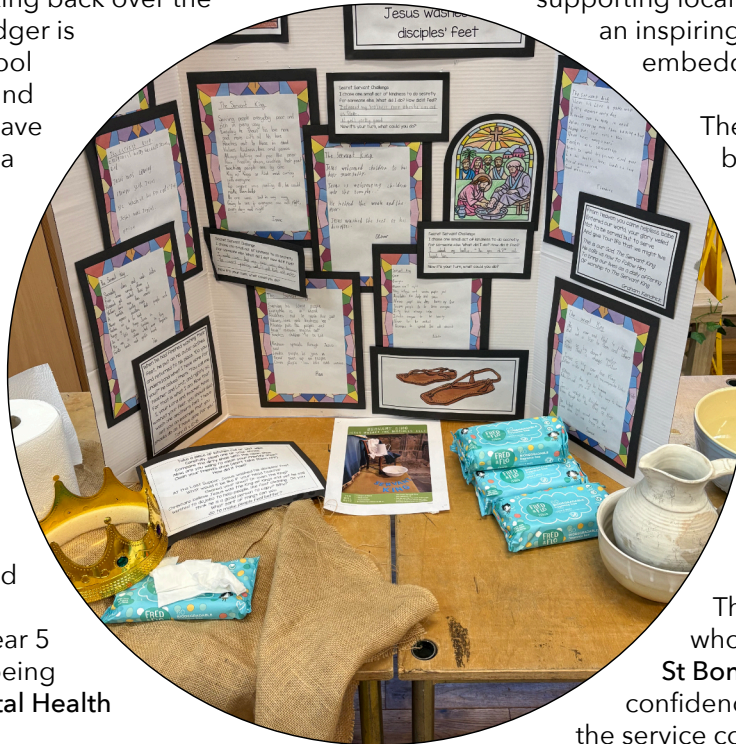


School life has been vibrant, purposeful and filled with opportunities for pupils to engage with a broad and balanced curriculum. Looking back over the term, Headteacher Nic Badger is amazed by all that the school community has achieved and the rich experiences that have been provided to nurture a genuine love of learning.

From **Cheshire Cricket Club** coaching sessions to **Bikeability** in January, and a wonderfully imaginative **World Book Day** in March, pupils have enjoyed a range of exciting trips: Year 3 explored the **Blue Planet Aquarium**, Year 4 immersed themselves in the **Deva Roman Experience**, and Year 5 visited **Jodrell Bank**. Wellbeing was our focus during **Mental Health Week** in February.

Several visitors were welcomed into school. Reception took part in an engaging workshop with **Animals Take Over**, and the whole school benefitted from a **World Faith Day** on Judaism led by Ann Angel.

Alongside fundraising for **Red Nose Day**, several children initiated their own charitable projects – supporting local and international causes – an inspiring reflection of the kindness embedded within our school.



The Easter experiences have been especially meaningful. Year 5 visited Kelsall Methodist Chapel for the Easter Hope Journey, exploring Holy Week through drama, reflective stations and guided storytelling. This deepened their understanding of Easter's themes of hope, courage and renewal.

The term finished with our whole-school **Easter Service at St Boniface Church**. Led with confidence by the Year 6 narrators, the service combined Bible readings, poems, prayers and creative class contributions that brought the Easter story to life. The atmosphere was joyful, reflective and deeply uplifting. The **ALIVE** group and families were welcomed to the **Easter Experience Exhibition** on Maundy Thursday and Good Friday.

Nicola Badger Headteacher

Gardener's diary

Spring colour at last!



The garden up until now has been too wet and cold to do anything and of course it is running away from us. So as I write at the beginning of April the spring garden plan is beginning to come to fruition.

Gardens should not be static, so after the initial structural planning and some plants having not survived the winter, I have been replanting some areas of my spring garden.

The garden is now awash with colour. I have never grown wallflowers before, however they do add a dimension to the spring garden along with the tulips, anemones blanda and daffodils,

giving a magnificent display. This type of planting takes some work as you will have large areas in the garden which will need to be replaced with summer plants and perennials in May.

I have two camellias which give a fantastic show, however they can grow to eight feet and above. I have reduced the lower half of the branches to reveal the stems which will give a much more open structure. I am very pleased with the result. I can now see through the tree and it has given a much lighter aspect. It will be a couple of years before it is covered in flowers again but I think it will be worth it.

This type of seasonal planting is a lot of work but the results will be very rewarding.
Happy gardening.

Keith

Sky notes for May

The star of the show in May is the planet Venus. It's impressively bright, almost dazzlingly so, in the western evening sky after sunset. Often referred to as the 'Evening Star', it sets around midnight. It is so bright it can even cast shadows (when there is no bright moonlight or artificial lighting to interfere).



Sometimes people are taken by surprise by the appearance of **Venus** shining away in a dark sky and they wonder what it is. I often get calls about it when it makes such an appearance. We have several weeks to enjoy Venus at its best, and brightest.

Take a look at Venus through binoculars or a small telescope (be sure that the Sun has set!). You might be able to make out its phase in a similar way to the Moon's phases.

The crescent Moon is near Venus on **18 and 19 May** as shown in the accompanying sky chart. This will be a beautiful sight. Jupiter will be to the left and higher in the sky than Venus.

We actually have two full moons this month, on **1 and 31 May**. The second full moon in any month is sometimes called a 'blue moon'. It doesn't appear blue, though! It derives from the phrase "once in a blue moon", as only every two or three years do we get to witness two full moons in the same month.

Clear Skies! – Bunbury Stargazer

Look for the crescent Moon, Venus and Jupiter in the west after sunset on 18 and 19 May. This chart shows the sky at 10.30pm on 18 May (charts produced by the author using Sky Safari Pro)

INSPIRE 26 — art & flower show

26 – 28 June St Boniface Church

On Friday 17 April it will be 10 weeks until the INSPIRE weekend!

The INSPIRE team are hoping that seeds and plants are growing in pots in people's gardens ready for the outdoor display.

Let's pray for some decent weather so that everything grows. Drop off times for bringing up the plants will be in the June Link. If anyone has any interesting, recycled containers that we could borrow to put pots in, we would love to hear from you, but please do not give us anything that has huge sentimental value in case anything happens to it.

The INSPIRE team would also be very grateful for any donations of cakes for the cafe.

IMPORTANT DATES!

Open call for artists — entry deadline Tuesday 19 May

Children's art competition — entry deadline Monday 1 June.



Bunbury's Got talent Show off your skill!


Do you have a hidden talent as a
craftsperson or artist?

Have you made or painted a piece of work
we could display in our summer exhibition,
INSPIRE 26?

This is for local people who do not wish to
sell their artwork. People can put in one
piece. It can be art, embroidery and textiles,
ceramics, sculpture, model-making,
metalwork, woodwork, jewellery. The items
to be collected at the end of the exhibition

If anyone would like to show off their
handicraft skills, but not sell their work
contact Elaine Crotty 01829 260648 or
email inspire26art@gmail.com

The deadline for entering is 1 June


Art & Flower Show
26 - 28th June
St Boniface Church Bunbury

Children's Art Competition

An opportunity to exhibit your work alongside professional
artists at Inspire 26 Art Exhibition with prizes

Theme : Self Portrait

Must be on A5 paper (portrait format)
Any material/medium pencils, pencil crayons, paint, pen....
No collage/items stuck onto surface
Deadline 1st June 2026

Categories: Pre School 0-4, Key stage 1 4-7, Key Stage 2 7-11, Key
Stage 3 11-14, Key Stage 4 14-16

Deliver to St Boniface Church (in named box provided) or Bunbury
Aldersey School

Name Age and contact number on the back

Contact Lucy Munro with any questions 07580 066153
or visit <https://www.stbonifacebunbury.org>

THANK YOU!

Thanks to Bunbury Parish Council

St Boniface Church wishes to thank Bunbury Parish Council for their generous contribution to the annual servicing of the clock on the church tower. The clock dates from 1873 and the mechanism remains as originally manufactured. To ensure the clock continues to be reliable and accurate it is serviced each year by a turret clock specialist. This year we are most grateful to the Bunbury Parish Council for recognising the clock's local importance and for their contribution to the cost of the annual servicing. The bellringers have also recently been busy in the church tower making improvements to the flooring around the substantial ancient wooden frame on which the 8 bells are hung. New flooring has been laid to allow easier and safer access to the bells when needed, and a railing has been constructed to prevent accidental access to a trap door that covers a deep drop down to the ringing

room below. The ringers are grateful to Fiona Harris, a carpenter with an interest in heritage work, who volunteers along with some of our ringers at Bunbury Mill and who gave her time to design and construct the new railing.

A spring clean in the tower also identified a number of old bell ropes that have been stored for many decades but are no longer needed. The coloured "Sallys" are around 60cm long and attached to hemp rope of various rope lengths. Their age means they are no longer suitable for ringing so if anyone in the village is interested in repurposing one or more of these please email our Tower Captain, David Riley, at davidriley001@gmail.com. There is no purchase price being asked, but a donation would be appreciated that will go towards refurbishing the clock face.



The ALIVE Pen Pals scheme

Over the last two years members of the ALIVE group have become pen pals with Year 6 children at Aldersley School. This initiative has been hugely rewarding for both age groups. The older members were able to give first-hand accounts of how it was to be a child during and just after World War Two (some in the group are well into their nineties!).



The children invited the group to a Christmas lunch followed by making paper Christmas trees (some were more successful than others) and everyone enjoyed listening to their singing of some wonderful carols.

Last week the group were again invited to visit the children for their Easter celebrations. Each class had created a piece of work representing the five stations of the cross.

A wet wipe to clean our shoes, representing the disciples' washing of feet at the last supper. Bread and wine (the wine cleverly represented by red grapes) and crosses on which the group could write hopes for the future. Such beautiful and meaningful work had been accomplished by the children. After a cup of tea and a hot cross bun, and with the children's help, paper Easter chicks were made.

Through the Alive pen pals project, the children have a very personal link to a social history which will soon be lost forever.



Remembering Andy Moore

Andy grew up in Southwell, Nottinghamshire. With his mum Joan, dad Tom, and sister Karen. He had a happy childhood, spending lots of time on the family farm. His best mate growing up was Steve and this friendship lasted a lifetime. Steve was best man at his wedding and they never lost touch.

School wasn't Andy's strong point, but he excelled in anything sport based, especially rugby and cricket playing both to county level as a junior and playing both well into adulthood.

After school he joined the merchant navy, spending 6 years sailing the world as second mate. Afterwards he moved back to shore to do a degree in nautical studies at Liverpool polytechnic.

Whilst in Liverpool he met Chris through sport, with Andy's rugby team challenging Chris's netball team to several matches (of netball not rugby). Both being very sport centred they hit it off immediately. Marrying after 18 months they moved into a bungalow in Liverpool.

They moved to Nigeria within two years of getting married and Andy managed an inland container depot in Kano. He made it onto the golf course most days, with the work radio in tow so that his bosses thought he was still working. Jo was born in England in February 1984 but spent her first year on the golf course in Nigeria, being looked after by the "second" caddy while both Chris and Andy played.

Moving from the edge of the Sahara Desert to Shetland in 1985 was a bit of a contrast. The family enjoyed a laid-back couple of years, but actually having to look after Jo themselves!

Lynsey was born in Liverpool when Chris and Andy were living temporarily with her parents. The family then moved to Bunbury. Working in Ellesmere Port and

Liverpool Andy was in charge of exporting coal to Ireland. The family was complete in 1989 with the arrival of Rick. Andy's final hope of having a son!

Andy was made redundant in 1991 which led to him throwing himself into village life while Chris went back to full time work. His merchant navy training made him the perfect house husband. His meticulous ways meant he was chief cleaner, cook and even seamstress.

1993 resulted in one of his biggest achievements within the community: the re-birth of Bunbury Cricket Club. Along with Jerry Tweddle, Andy Shearer and others, they created the cricket ground and coaxed people to get involved to fill a number of roles within the club. The club went from strength to strength and is still going strong today.

Jerry recalls that happy time. "Andy was always the star of that generation whether batting, bowling, wicketkeeping or fielding, but avoided the conflict of umpiring, always preferring the sanctuary of the score box. He was indeed a very talented sportsman. We shared a hatred of being out, hence you will still find a bench on the cricket ground with the inscription 'ANDY AND JERRY'S SULKING BENCH'"

In 1993 Andy trained to be a driving instructor with BSM. His calmness in the passenger seat was incredible considering what he was doing. His confidence in his pupils completely outweighed their own confidence, which says a lot about how skilled he was as an instructor.

Andy retired in 2014 in time to take up Grandad duties as Liv, Henry and Freddie had all joined the family. Retirement life was filled with great holidays overseas with Ann and Jerry Tweddle, and Tim and Judy Gray. Regular visits to Canada and South Africa to see the family were always very special.

The latter years were hard, having battled and beaten cancer in 2019 before Alzheimer's came towards the end of 2020. Jerry Tweddle recalled an eventful walk that he and Andy took with their two dogs during that time: "We frequently walked the Whitegate Way or Oulton Woods with our dogs. A year or so ago I found myself in Oulton Park with Andy heading off in one direction, a deaf Tess in another and a very deaf Bonnie walking the other way. My calls to all of them went unanswered leaving me alone with two empty dog leads. Eventually I spied Andy heading back with Tess, I still don't know who found whom, but Andy was grinning happily."

The illness did not define Andy, and the family want him to be remembered as the fun-loving family man that he was. Fiercely loyal and annoyingly meticulous.

Bunbury Medical Practice

News - May 2026

Staff Update

We are pleased to announce that **Annie Lloyd** has joined our nursing team at Bunbury as our new Practice Nurse. **Dr Arfa Ayob** has now successfully completed her registrar training and left the practice in mid-April. **Dr Eva Yuen** is our new registrar.

Digital Front Door Update

This has now been up and running for a month and is going well, making it easier for patients to access our services.

For more information, head to our website; you will need your NHS number to get started which can be found in the NHS App, on hospital letters, by calling our reception team or by entering "Find your NHS number" on your browser.

Our phone lines remain available for those who need them but we are encouraging patients to use the Digital Front Door wherever possible as this will help reduce waiting times and ensure everyone receives the right support quickly.

Training Days for 2026

The practice will be closed from 1:00pm Tuesday 12 May; it will reopen the following day at 8:00am. All training days for 2026 can be found on our website.

Hayfever Season

The best hayfever treatments are all available over the counter. Regular antihistamine (such as Loratadine or Fexofenadine), steroid nasal spray (such as Beconase/Flixonase) and regular eye drops (sodium cromoglycate), can all be started one to two weeks before the hayfever season begins, and continued throughout the summer if needed; this regime should help to alleviate symptoms.

National Walking Month

May is National Walking Month for 2026 when people across all ages and backgrounds are encouraged to get outside and embrace the simple yet profound health benefits of walking.

This month-long event is the perfect opportunity to explore the great outdoors, improve fitness and connect with others in a healthy, enjoyable way.

And the benefits of walking ..

It can be done anywhere and anytime

It is free/low cost

Regular walking can allow you to keep fit and meet new friends

It can help reduce stress and aid sleep

It can help maintain weight and maintain healthy bones, muscles and joints.



**Exceptional care by
Exceptional people**



Visiting care

Bespoke home support



Live-in care

24 hour care at home



Adult day care centre

A space to socialise and relax

Call us for a chat about care



01829 697 043



tarporley@radfieldhomecare.co.uk
www.radfieldhomecare.co.uk



Jacqueline Wilson



Independent Funeral Services Ltd

www.jwifs.co.uk

Over 25 years local experience

NAFD Qualified

24 hours a day Personal Service

Private Chapel of Rest

Pre-paid Funeral Plans



HILL VIEW
HIGH STREET

CLOTTON

TARPORLEY

CHESHIRE

CW6 0EG

TEL: 01829 781572

EMAIL: jackie@jwifs.co.uk

40A MAIN STREET

FRODSHAM

CHESHIRE

WA6 7AU

TEL: 01928 643078

EMAIL: frodsham@jwifs.co.uk

1 CROWN BUILDINGS

LATHAM AVENUE

HELSEBY

CHESHIRE

WA6 0DX

TEL: 01928 391699

EMAIL: helsby@jwifs.co.uk

TARPORLEY ROAD

TARVIN

CHESTER

CHESHIRE

CH3 8NF

TEL: 01829 740002

EMAIL: tarvin@jwifs.co.uk

74 WESTON GROVE

UPTON

CHESTER

CHESHIRE

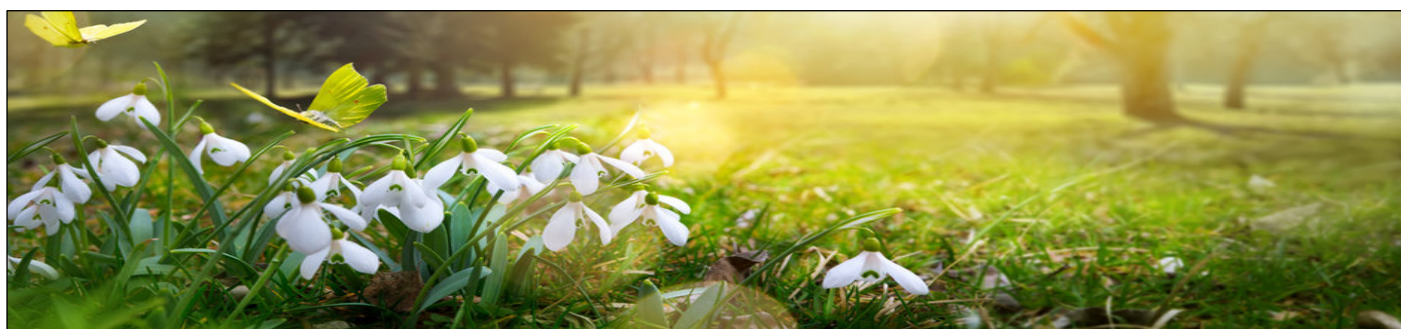
CH2 1QL

TEL: 01244 952540

EMAIL: upton@jwifs.co.uk



Golden Charter
Funeral Plans 



A.W. Burrows & Son LLP

Independent Family Funeral Directors



ESTABLISHED: 1841



Complete Funeral Arrangements, Funeral Plans Arranged,
Personal Day and Night Service,
Private Chapel of Rest in Peaceful Rural Surroundings
Snowdrop Villa, Swanley, Nantwich, Cheshire, CW5 8QB



01270 524243 / 07711468917

Email : info@awburrows.com

www.awburrowsnantwich.co.uk

HJ Lea Oakes

Wardle Country Store & Service Station

FUEL STATION
CONVENIENCE STORE
HOT FOOD & DRINKS TO TAKEAWAY
FARM, EQUINE, PET & SMALLHOLDER STORE



NANTWICH ROAD, WARDLE, CW6 9JS
www.shop.hjlea.com | 01829 260304

MORNFLAKE
Mighty Oats

**GIVING BRITAIN
MIGHTY
MORNINGS**

SINCE 1675

MADE WITH 100% BRITISH OATS

SEE OUR FULL RANGE AT MORNFLAKE.COM




The Dysart Arms



A truly classic English village pub with open fires, bookcases, lots of old oak and a lovely garden.



Daily menus of fresh food, local ales and a decent wine list.

01829 260183 ~ www.dysartarms-bunbury.co.uk

Bowes Gate Road • Bunbury • Tarporley • CW6 9PH

THE BUNTING
PARTNERSHIP



THINKING OF EXTENDING, RENOVATING OR A NEW BUILD?
THEN PLEASE GET IN TOUCH



The Bunting Partnership Ltd, Chartered Architects, create quality and imaginative designs to improve your lifestyle.
For enquiries, please call 01829 863663, visit our website buntingpartnership.com or contact cathy@buntingpartnership.com



SOVEREIGN
W·I·N·D·O·W·S

Est. 1984

TEL: 01829 772577



Providing you with
QUALITY UPVC
windows & doors since

1984

**CALL US TODAY
TO TAKE ADVANTAGE
OF OUR
UNBEATABLE
PRICES!**

VISIT OUR SHOWROOM

Unit 4, New Russia Hall, Chester Road,
Tattenhall, Nr Chester CH3 9AH
www.sovereignwindows.co.uk
info@sovereignwindows.co.uk

Opening Hours:
Mon-Fri: 8AM-4PM
Sat: 9AM-12PM



Solidor **FENSA**
Registered Company

FINE FABRICS

EST. 1984 *Cheshire* TARPORLEY

We are a family run business established in 1984.

We offer a vast selection of fabrics, carpets and accessories for all budgets.

Find us at Portal House on the A51 between Naylor and Pebbles – CW6 9GT.

We are open 9am – 4pm Monday to Saturday (12:30pm on Wednesdays).

You are welcome to come along and browse or one of us can help to lead you to your choice.

We also offer home selection, and we have a full measure, make up and installation service.

Give us a try!

finefabricscheshire.co.uk

01829 733530

enquiries@fine-fabrics.co.uk

Follow us on Facebook and Instagram



**TO ADVERTISE YOUR BUSINESS
AND SPEAK DIRECTLY TO OUR 3,500
REGULAR READERS**

PLEASE EMAIL

parishlinkads@stbonifaceunbury.org

4 Star

*New Farm
B&B
Caravan Park*

**Five en-suite rooms
Touring Caravans
Course Fishery (4 lakes)**

- Locally sourced food
- Set in the heart of Cheshire
- Ideal for the Tarporley area
- Perfect for family holidays/occasions

www.newfarmcheshire.co.uk
telephone 01270 528 213
long lane wettenhall cw7 4dw

WILLIAM & MAURICE

KITCHENS • BATHROOMS • TILING



Complete Design, Supply and Installation Service
Contact us today for your new bathroom, wetroom, kitchen
or to use our professional tiling service

01829 262462 or 07980 748065

www.william-maurice.co.uk

info@william-maurice.co.uk

NO VAT ON INSTALLATION

Piano tuning, repairs & restoration

Andrew Dean

(Dip. NTC, CGLI, AVCM)

01829 261222

andrew@pianodean.co.uk



BIRTHNERD
Cheshire
Supported | Informed | Prepared

ANTENATAL & HYPNOBIRTHING COURSE
Near Nantwich

ARE YOU EXPECTING A BABY IN 2026?
Would you like to be fully prepared for birth,
feeding and parenthood?

- ✓ Small groups
- ✓ Led by experienced, practising Midwife
- ✓ Covers birth, feeding & early weeks
- ✓ Ongoing support until birth
- ✓ Postnatal support also available

For more info contact Shanaz at:
✉ birthnerdcheshire@gmail.com
🌐 www.birthnerdcheshire.co.uk

**TARPORLEY
DENTAL CENTRE**

Accepting New Patients

High quality Private, general
and cosmetic dentistry.
Implantology and orthodontics.

Finance options available
13 Nantwich Road, Tarporley, CW6 9UN
01829 732213
info@tarporleydentist.co.uk
www.tarporleydentist.co.uk
tarporleydentalcentre.com

DM AUTO SERVICES

YOUR LOCAL INDEPENDENT GARAGE

Servicing all makes and models.

M.O.T. Testing Station

Bodywork repairs

Free collection and delivery

within 10 mile radius

Courtesy cars available

Fast, friendly and efficient service

Unit 1, Bank Farm, Calveley Hall

Lane, Calveley CW6 9LB

Tel: 01829 260230/260811

Fax: 01829 261100

WALKEEZ

Local Dog

Walking

Service

Call Lisa on

07816 916920

Bosworth

CW6 9UA



**MIKE LAING
PAINTER & DECORATOR**

T: 07429 337378
E: lainqmike44@gmail.com



At Illingworth Seddon, we don't over complicate things.

We follow a 3 step process to create a bespoke financial plan which ensures you are fully aware of where your finances are today, and where they could be in the future.



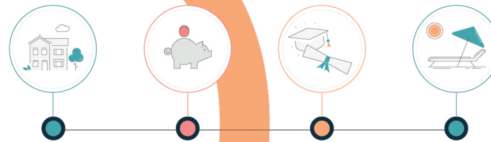
Plan

Starting with an honest, in depth discussion about your goals, we'll plan your roadmap to financial peace of mind.



Design

Considering where you are today, and where you want to be in the future, we'll craft a financial solution which is bespoke to you and the life you want to live.



Review

The review process never really ends. We'll stay by your side year after year, making sure your financial plan stays on track.



Sound interesting?

Contact us or visit our new website to find out more



01829 771 707

info@illingworthseddon.co.uk

www.illingworthseddon.co.uk

- Cheshire
- Merseyside
- Cumbria

